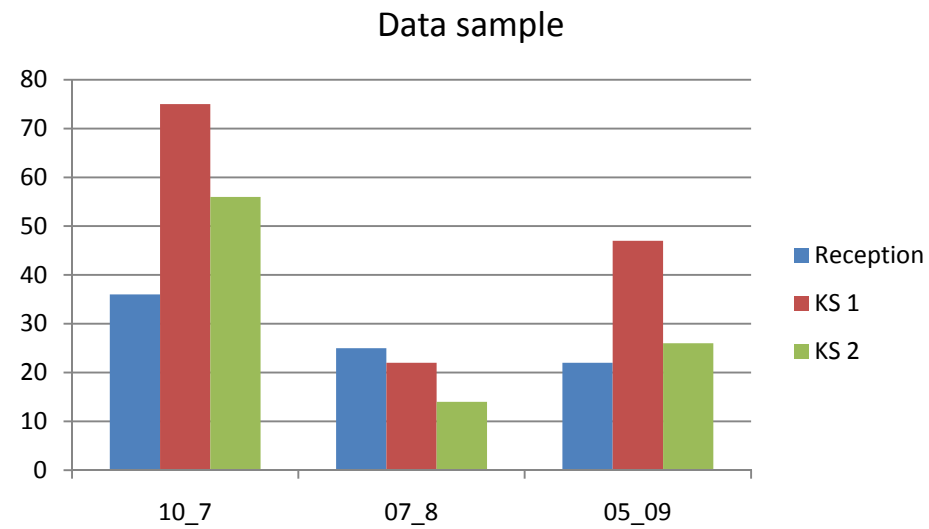
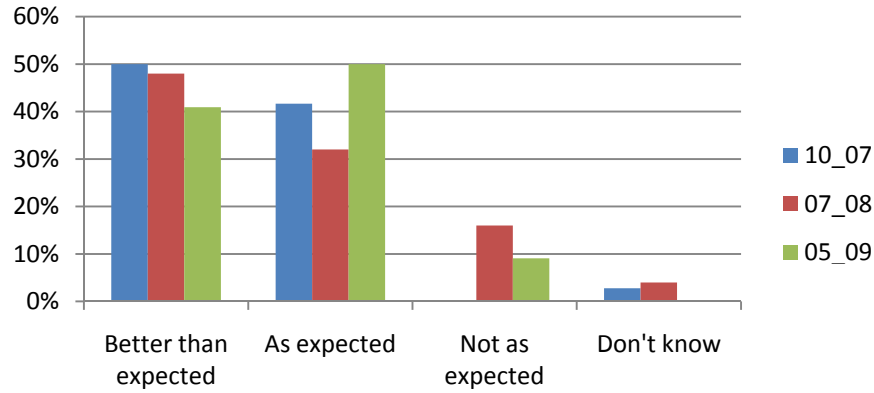


2009 Annual Parents Questionnaire Results

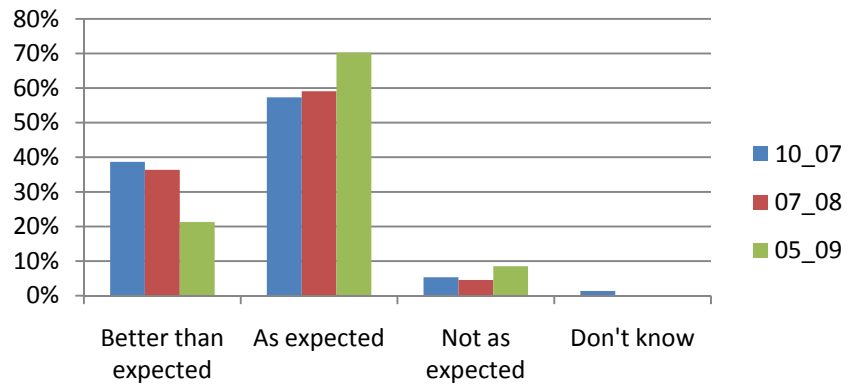


How well do you think your child has progressed this year ?

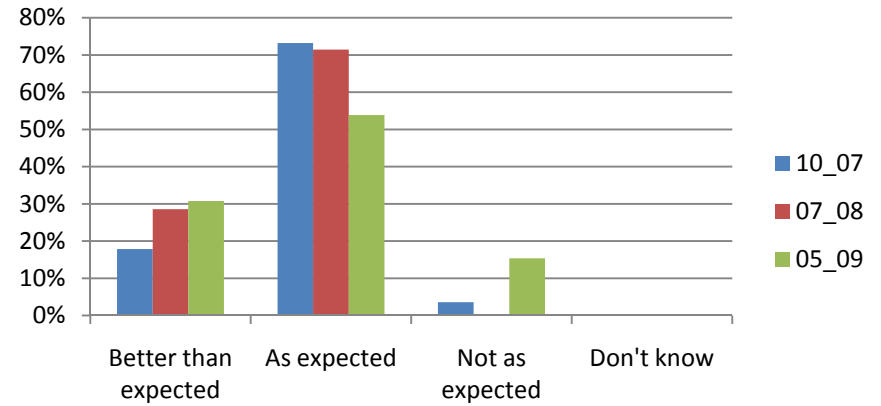
Reception



KS 1

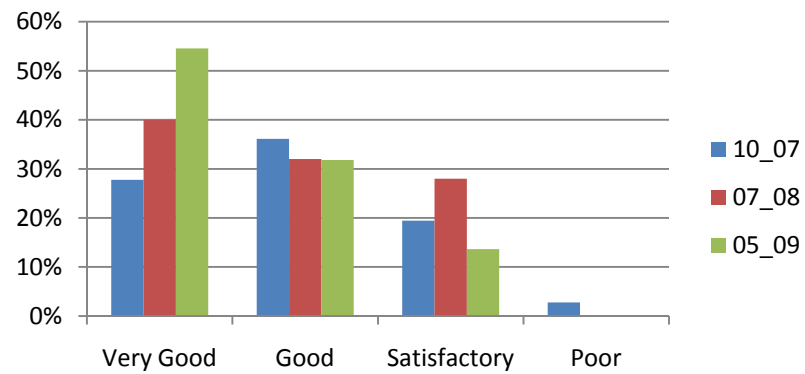


KS 2

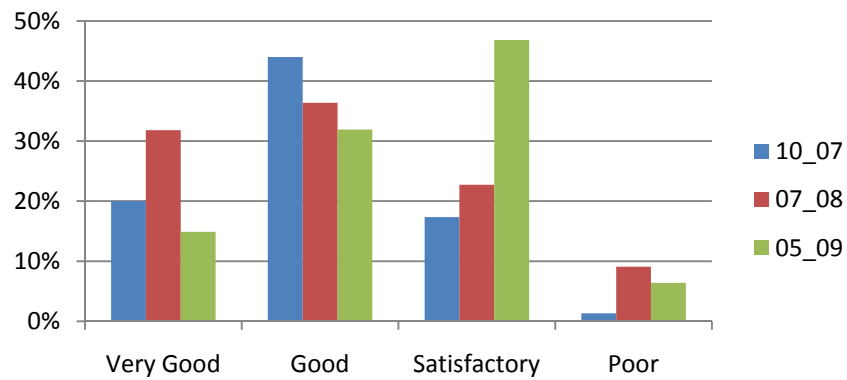


What do you think about the way you have been informed about your child's progress this year?

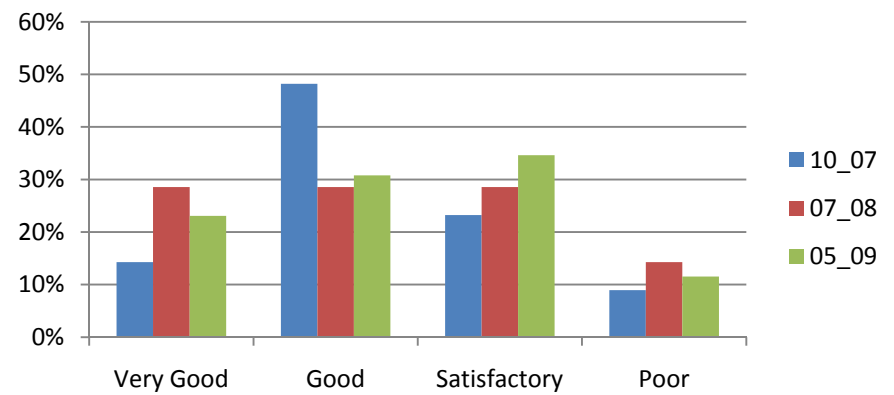
Reception



KS 1

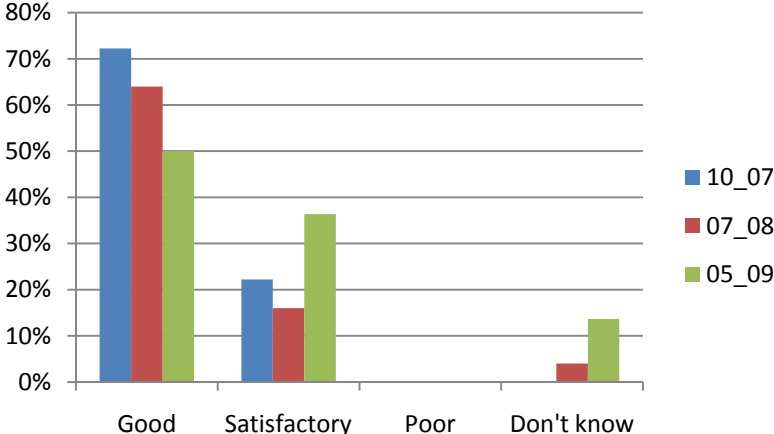


KS 2

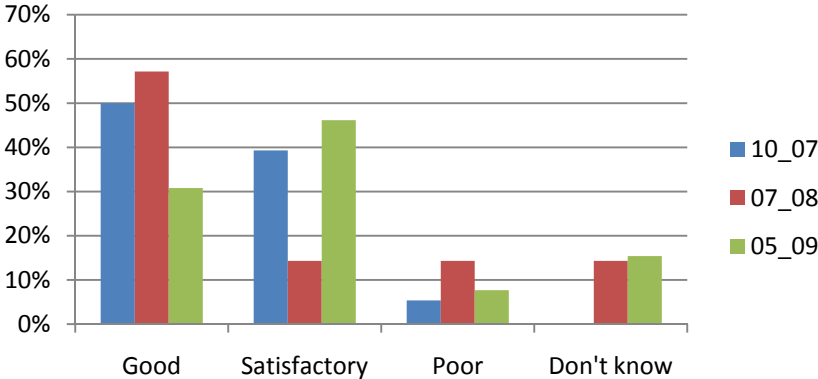


What is your impression of the changes that have been made in school this year?

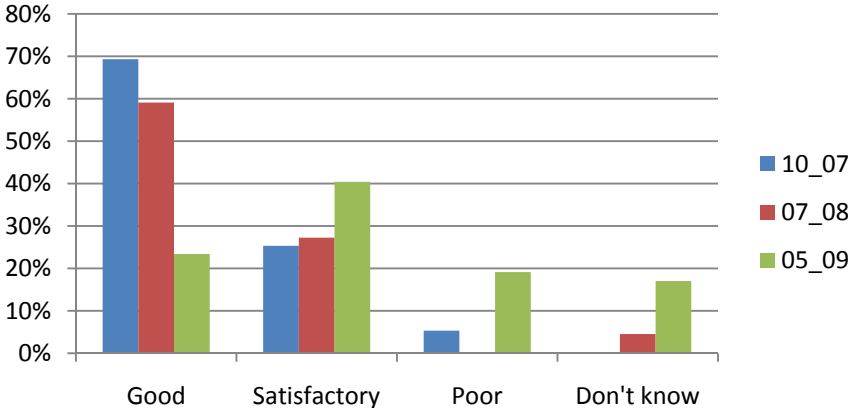
Reception



KS 2

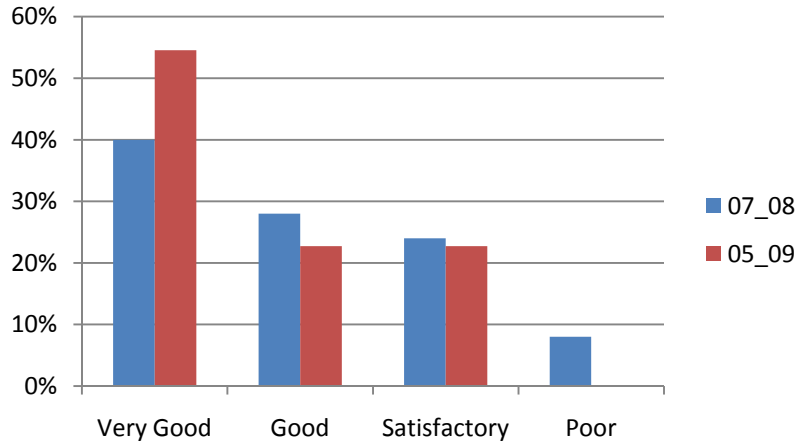


KS 1

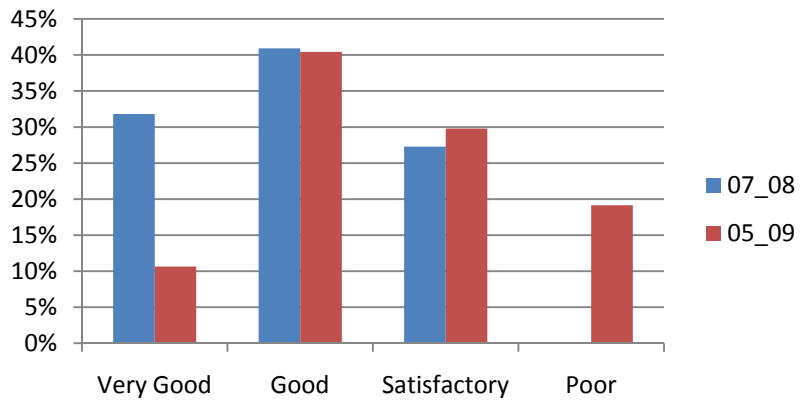


What do you think about the quality & content of information and communication over the past year?

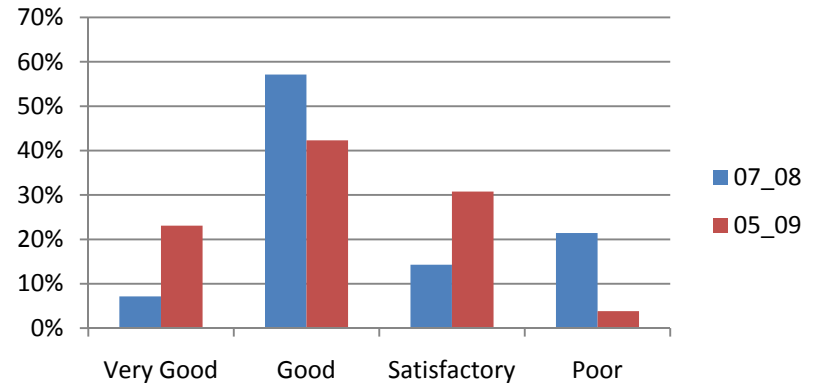
Reception



KS 1

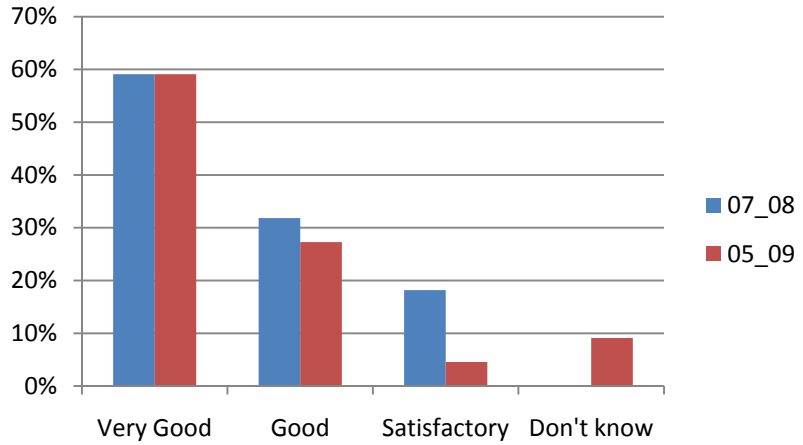


KS 2

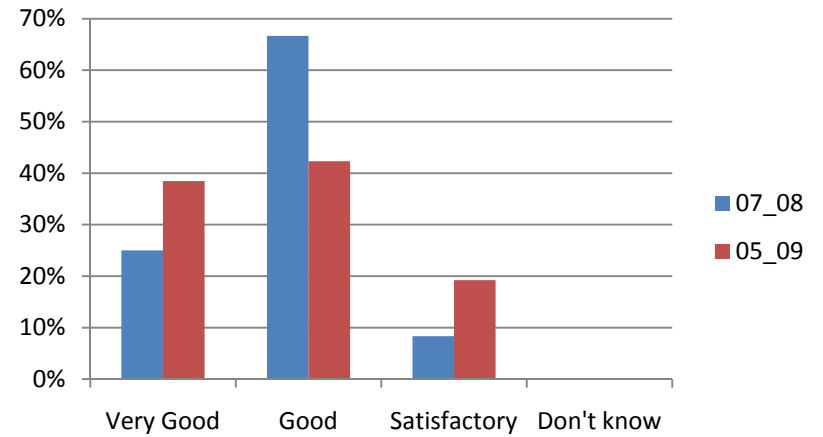


What do you think about the overall school leadership?

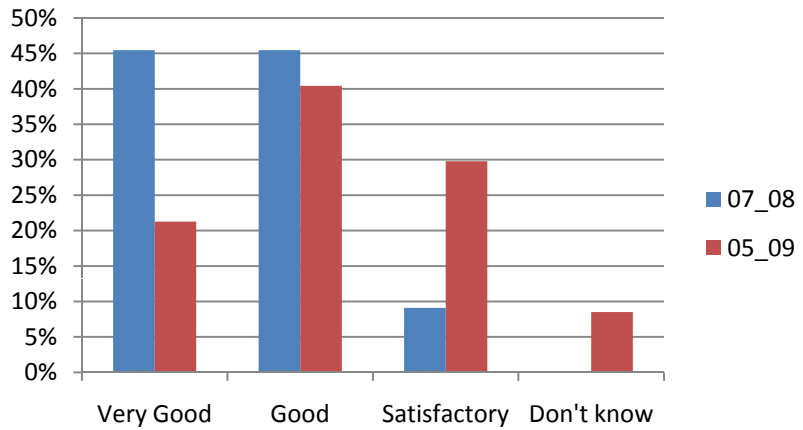
Reception



KS 2



KS 1



How successful do you feel we have been in achieving this years priorities?

